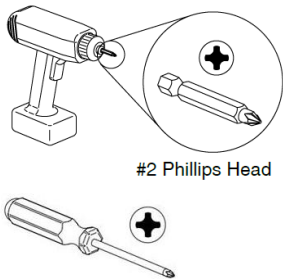


# CAAV

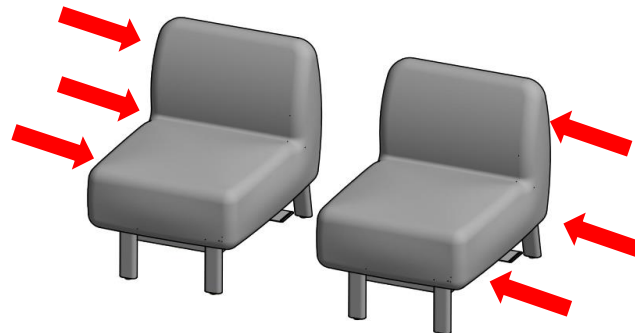
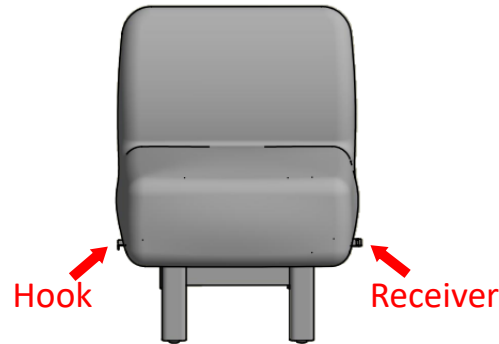
## GANGING INSTRUCTIONS

### Recommended tools



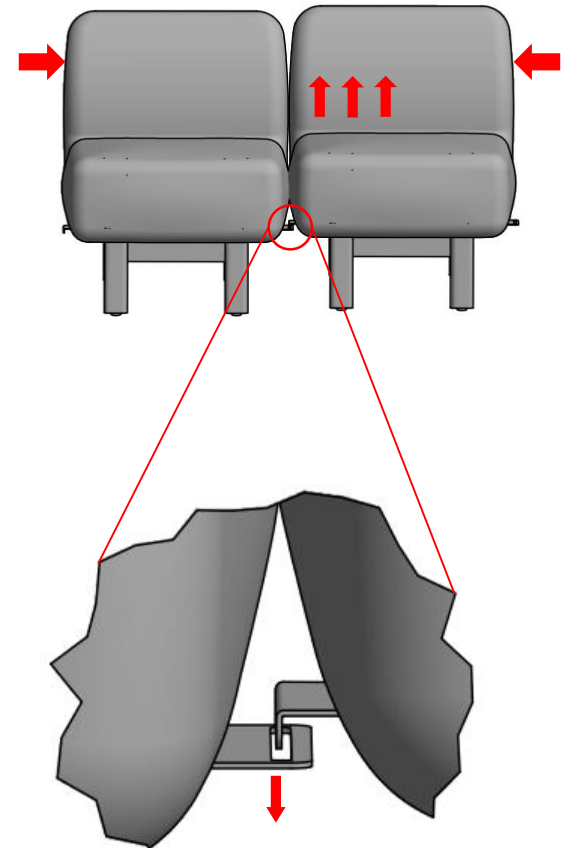
#### STEP 1:

- The modular/sectional unit will come with ganging brackets pre-installed. One side will be a “hook” and the other a “receiver”
- Align units as shown and slide close together



#### STEP 2:

- While pushing units together lift the side with the “hook” so it can drop into the “receiver” as shown
- Make sure “hook” is securely engaged in the “receiver”

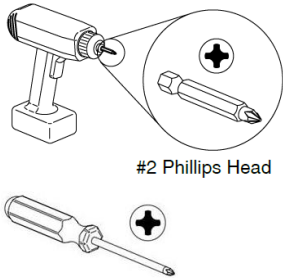


**NOTE: all screws provided must be installed for proper installation and compliance with product warranty.**

# CAAV

## GANGING INSTRUCTIONS

### Recommended tools

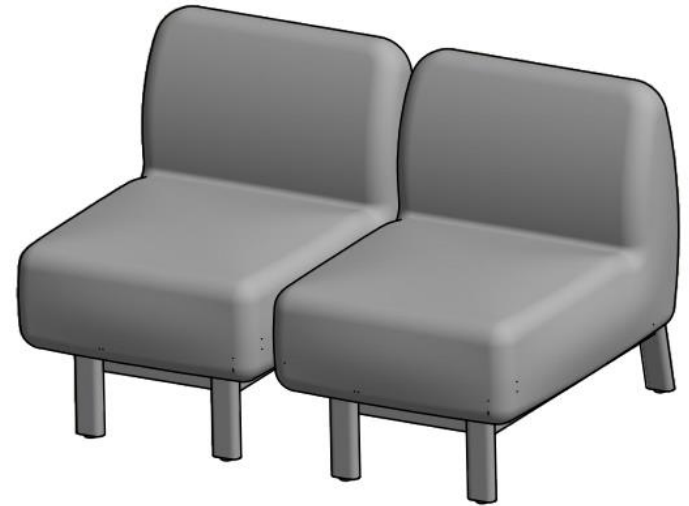
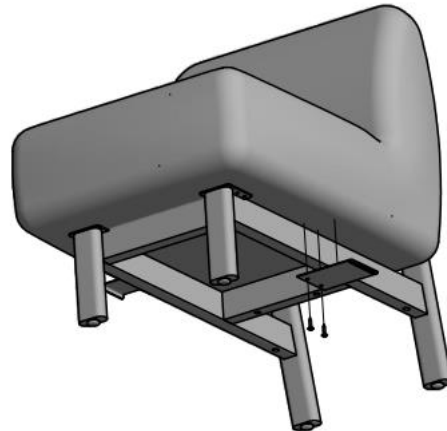
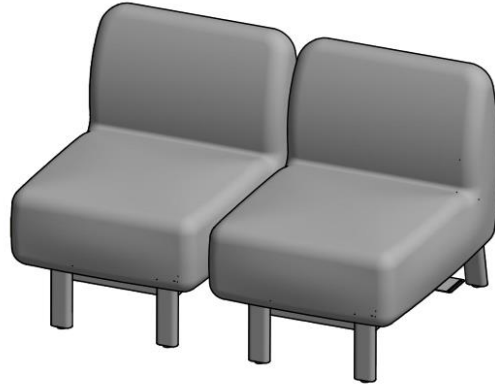


### STEP 3:

- Units are ganged and ready for the next unit to link
- In the instance the chair will be the last unit in the setting you may want to remove the unused ganging bracket.
- Lay unit over and remove the two screws attaching the bracket

### STEP 4:

- Link units together (same as steps 1 & 2)
- Properly level the units using the leveling glides
- Installation complete



**NOTE: all screws provided must be installed for proper installation and compliance with product warranty.**